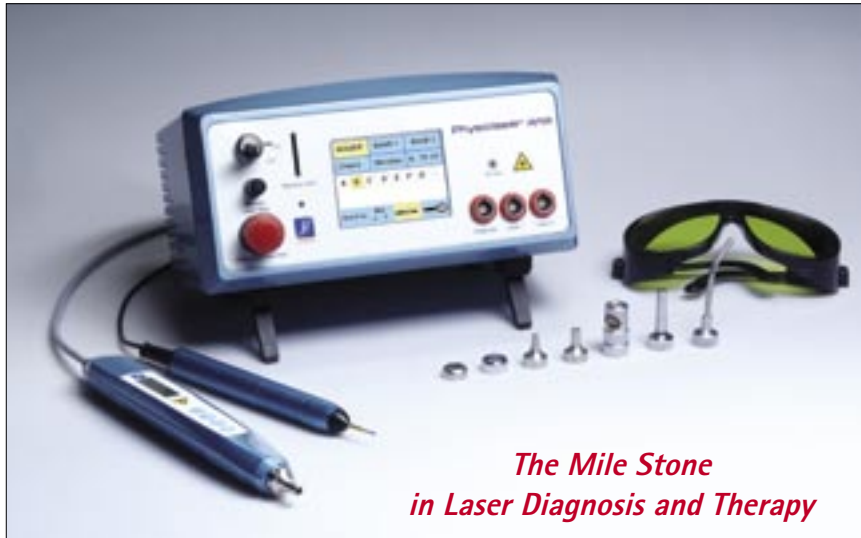


NEW

Physiolaser olympic

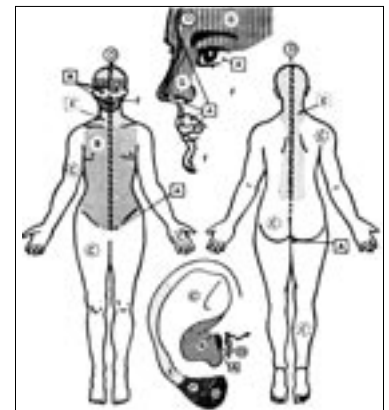


*The Mile Stone
in Laser Diagnosis and Therapy*

Physiolaser olympic (with touch screen), laser probe with large display, diagnostic probe, applicators, safety goggles. Available with therapeutic wavelengths up to 500 mW/810 nm cw and 90 W/904 nm pulse 200 nsec..

The new Physiolaser olympic offers more than ever and can be used in all areas of LLLT and biostimulation/biomodulation. It is designed for modern laser therapy, acupuncture + auriculo medicine. The touch screen offers easy operation and fast selection of the known therapeutic biofrequencies:

- **NOGIER, high potency 18688 Hz**
- **BAHR 1, high potency 38368 Hz**
- **BAHR 2**
- **Meridian frequencies**
- **Chakra frequencies**
- **All REININGER frequencies**
- **Free frequency selection, didactic program ...**



Nogier frequencies and body zones

and **many special frequency combinations and therapy programs**. It also offers a sophisticated diagnostic module for point detection and analysis of acupuncture points and organs using the VOLL and NOGIER (gold/silver points) methods.

Important: Slot for SD memory card to easily upgrade and service the Physiolaser olympic.



Delivery contents:

Main unit, power supply, safety goggles, warning sign, therapy manual, technical manual, safety lock, key, carrying case.

Optional: Probes, applicators

Laser class 3B

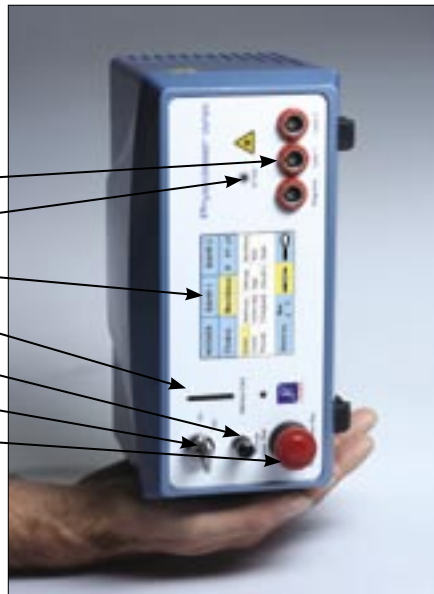


NEW

Physiolaser olympic

Fits in one hand, made for mobile operation with rechargeable battery, versatile and easy to operate.

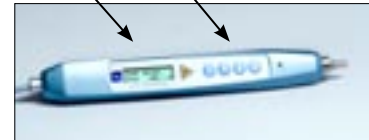
- Laser channels/diagnosis
- Laser test
- Touch screen
- Memory card (update)
- Safety plug
- Key switch
- Emergency switch



You can use two laser probes simultaneously (single/cluster) and a diagnostic probe in addition (point and organ measurement).

The laser and diagnostic probes offer the highest level of function with display and buttons for one-hand operation (e.g. for RAC).

Display Buttons for one-hand operation



Extensive selection of accessories are available including single and cluster probes in different configurations for successful laser therapy e.g.



Standard probe with *photon reflection foil*



Brush laser probe for contact therapy



Derma probe for anti-ageing therapy



Probe with 5x30 W/904 nm 200 nsec. pulse

Please contact us for more information:



RJ-LASER,
Medical — Laser — Technology



Quality management ISO 13485:2003

Distributor

Scientific Research Institute, Inc. □
8345 NW 66th St. 6587 - Miami, FL. 33166 □
□
Ph: 866-300-4343 Fax: 866-430-5858 □
Email: info@new-planet.net □
Web: www.sri.new-planet.net